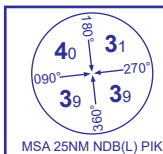
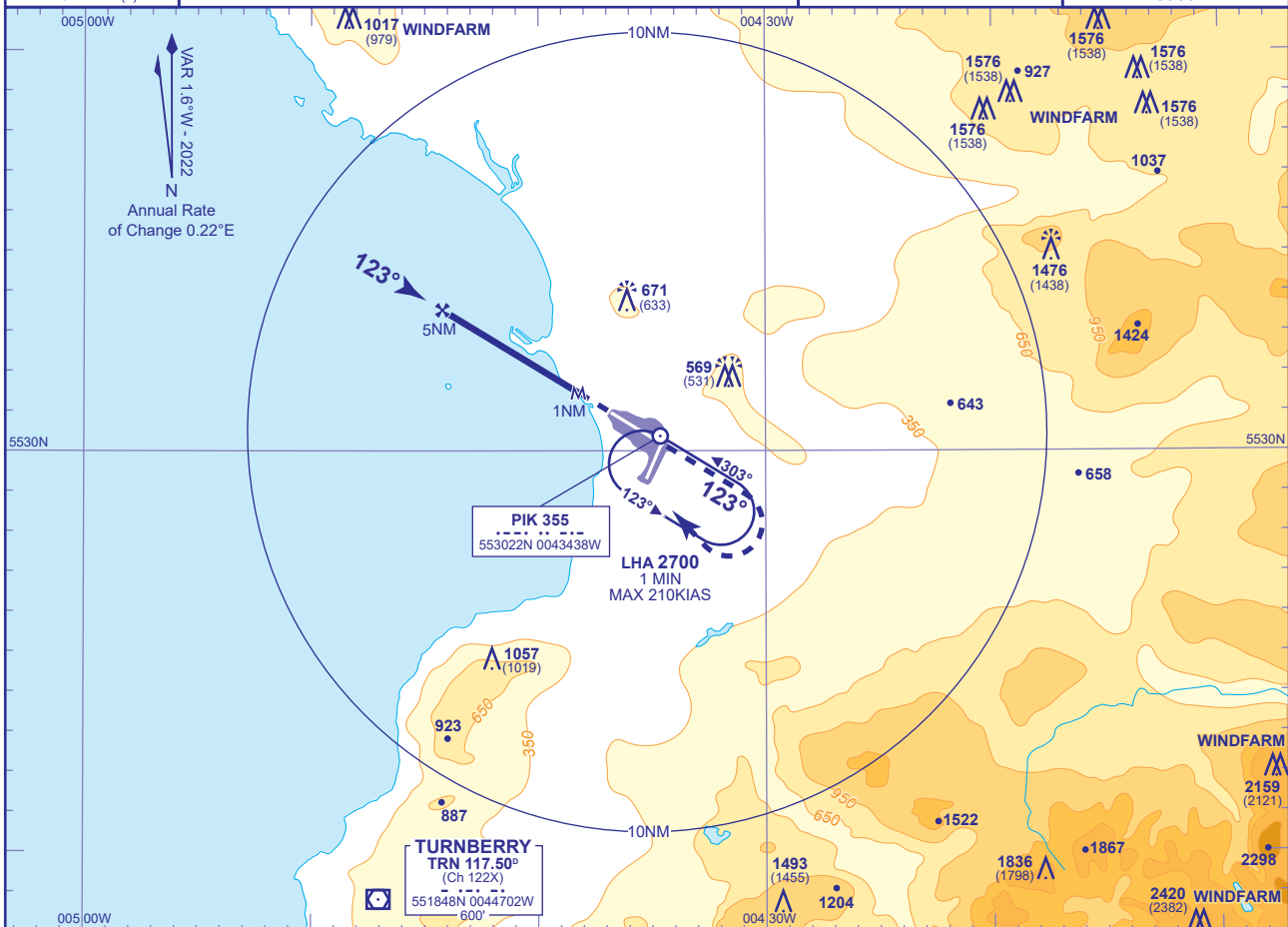


## INSTRUMENT APPROACH CHART - ICAO

PRESTWICK  
SRA RTR 2NM  
RWY 12  
(ACFT CAT A,B,C,D)

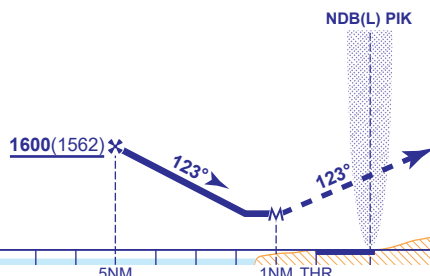
APP	129.450	PRESTWICK APPROACH	AD ELEVATION	65
TWR	118.150, 127.155	PRESTWICK TOWER	THR ELEVATION	38
RAD	129.450, 124.630	PRESTWICK RADAR	OBSTACLE ELEVATION	2420 AMSL (2382) (ABOVE THR)
ATIS	121.130	PRESTWICK INFORMATION	BEARINGS ARE MAGNETIC	

TRANSITION ALTITUDE  
6000

RECOMMENDED PROFILE Gradient 5.14%, 312FT/NM

NM	4.0	3.0	2.0
ALT(HGT)	1290(1252)	980(942)	660(622)

Initial and intermediate approach as directed by radar.



## MAPt 1NM after RTR

MAX 210KIAS. Continuous climb to 3000: Initially straight ahead to 2500, then right turn to NDB(L) PIK to hold at 3000 or as directed.

## UNABLE TO RECEIVE NDB:

Climb on Runway Heading to 3000, then a climbing right turn to VOR TRN to 6000 to hold or as directed by ATC.

Aircraft Category		A	B	C	D	Rate of descent	G/S KT	160	140	120	100	80
OCA (OCH)	Procedure	570(532)	570(532)	570(532)	570(532)		FT/MIN	830	730	620	520	420
VM(C)OCA (OCH AAL)	Total Area	800(735)	900(835)	1100(1035)	1100(1035)	RTR to MAPt (1NM)	MIN:SEC	0:23	0:26	0:30	0:36	0:45
	SW of RWY 12/30	750(685)	870(805)	1000(935)	1070(1005)							

CHANGE (5/24): MINIMA.